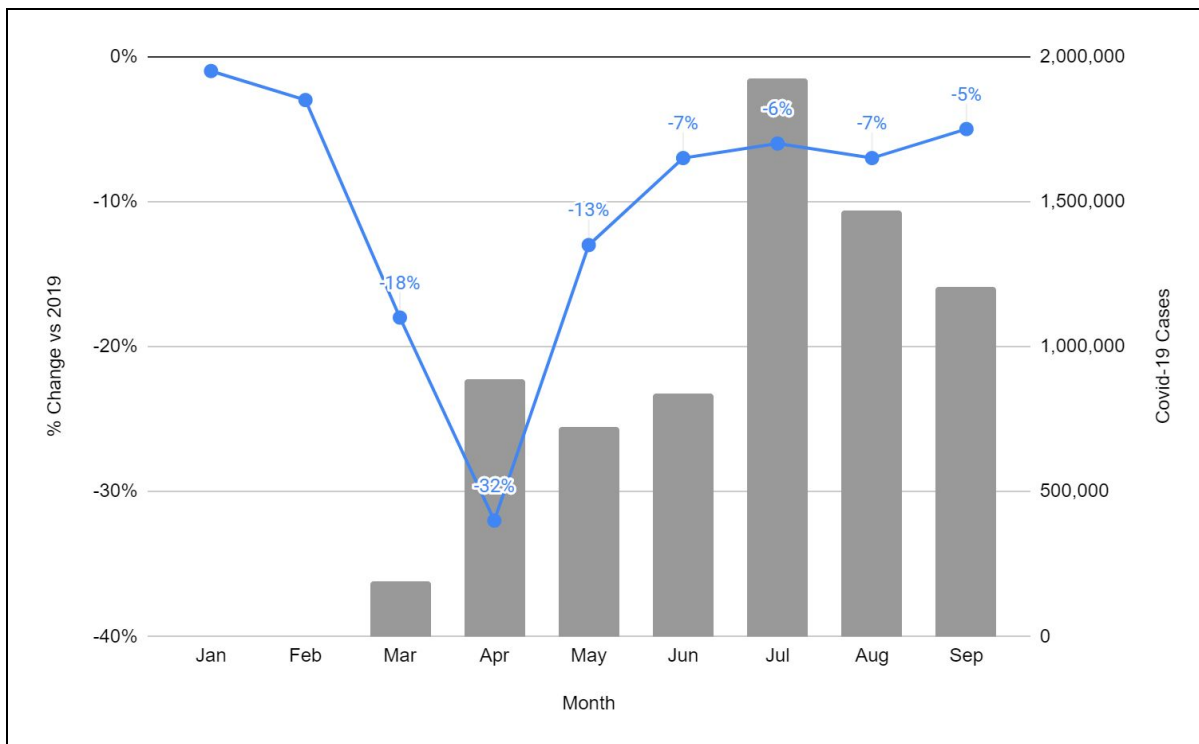
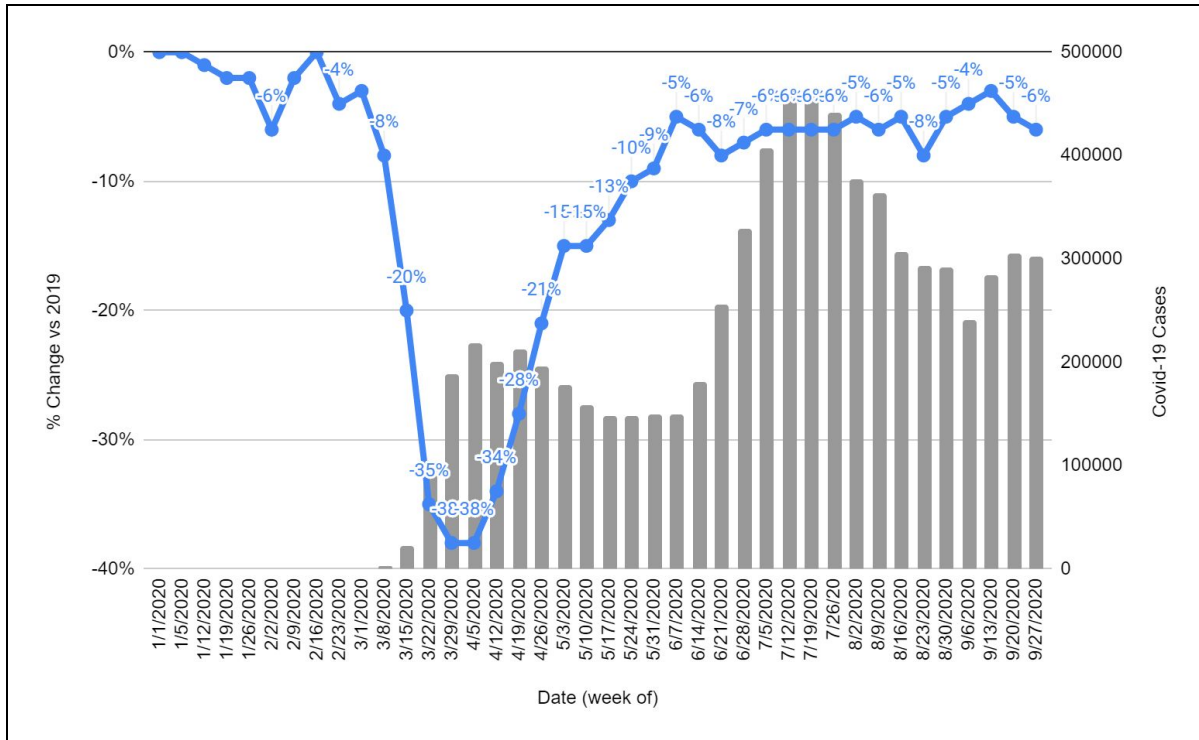


The Pulse of the Aftermarket

A White Paper Series by [Aftermarket Analytics](#) and [Full Throttle Technologies](#)

National Pulse: For YTD 2020 through Q3 here are weekly and monthly graphics illustrating aggregate RO activity and Covid-19 cases (US only).



For more information, please contact us:

Shawn Wills, Dir. National Accounts, Email: shawn.wills@aftermarketanalytics.com Cell: [303-956-2848](tel:303-956-2848)

Richard Bernstein, VP Business Development, Email: rbernstein@throttlefull.com Cell: [847-707-8450](tel:847-707-8450)

Market Pulse (Q1-Q3) and Forecast (Q4): In addition to monthly numbers, we've also received requests for quarterly figures. A chart showing 3 quarters of activity isn't a terribly interesting visual so, instead, here we provide market performance for the first 3 quarters of 2020 and our forecasts for Q4 for 20 major markets and the US.

Market	Q1	Q2	Q3	Q4 Forecast
Atlanta	-0.06	-0.13	-0.02	0.00
Boston	-0.05	-0.19	-0.06	+0.05
Chicago	-0.08	-0.17	-0.02	-0.08
Cleveland	+0.11	-0.11	+0.01	+0.10
Dallas	-0.17	-0.16	-0.04	0.00
Denver	+0.02	-0.13	-0.03	-0.01
Detroit	-0.11	-0.16	-0.03	-0.02
Houston	-0.10	-0.17	-0.09	-0.04
Los Angeles	-0.07	-0.19	-0.07	-0.01
Miami	+0.08	-0.13	+0.03	+0.03
Minneapolis	-0.08	-0.17	-0.06	-0.08
New York	-0.04	-0.15	+0.02	+0.08
Orlando	+0.03	-0.05	+0.08	+0.13
Philadelphia	-0.07	-0.17	-0.02	+0.04
Phoenix	-0.02	-0.05	+0.01	+0.06
Portland	-0.05	-0.27	-0.12	-0.10
San Francisco	-0.10	-0.25	-0.12	-0.09
Seattle	-0.05	-0.22	-0.10	-0.08
St. Louis	-0.11	-0.13	-0.06	-0.01
Washington	-0.15	-0.37	-0.21	-0.17
US	-0.07	-0.17	-0.06	-0.05

For more information, please contact us:

Shawn Wills, Dir. National Accounts, Email: shawn.wills@aftermarketanalytics.com Cell: [303-956-2848](tel:303-956-2848)

Richard Bernstein, VP Business Development, Email: rbernstein@throttlefull.com Cell: [847-707-8450](tel:847-707-8450)